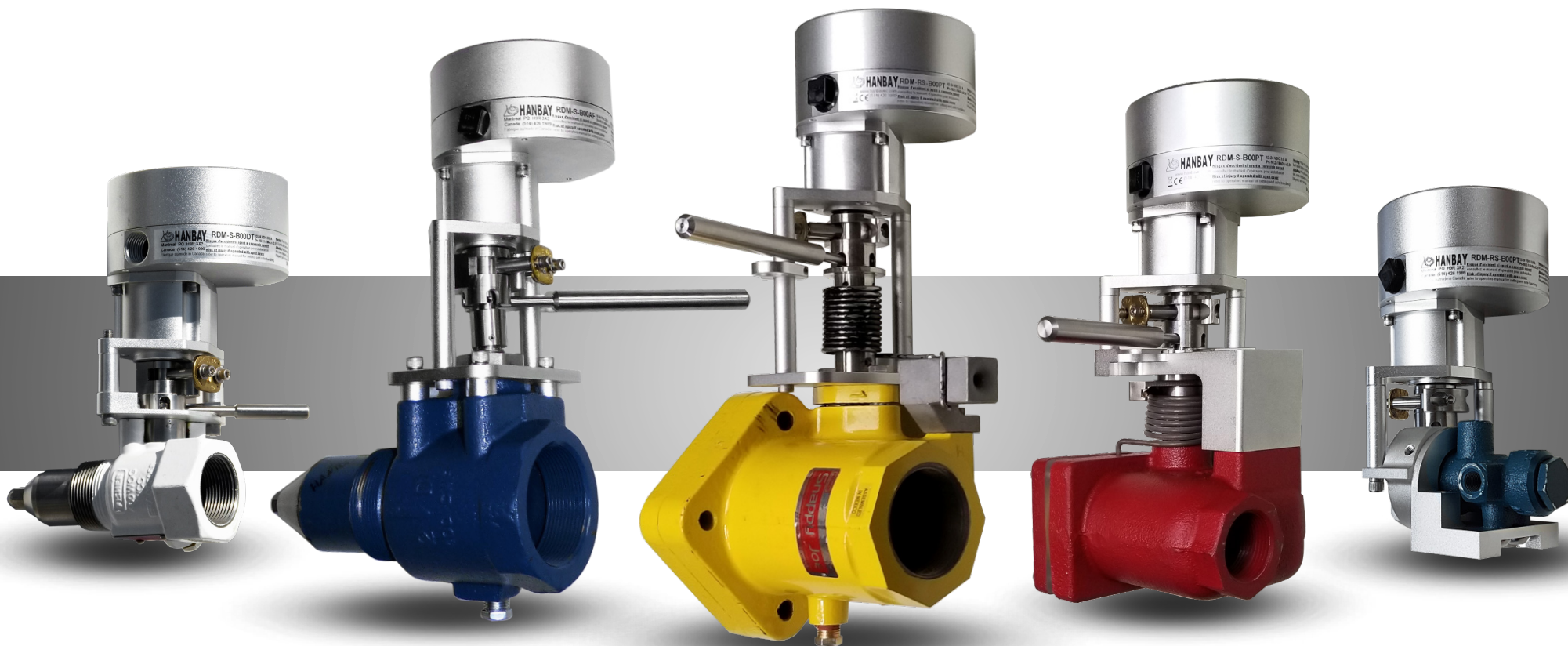


**HANBAY**  
ELECTRIC ACTUATORS

# SPRING RETURN FAIL-SAFE ACTUATORS

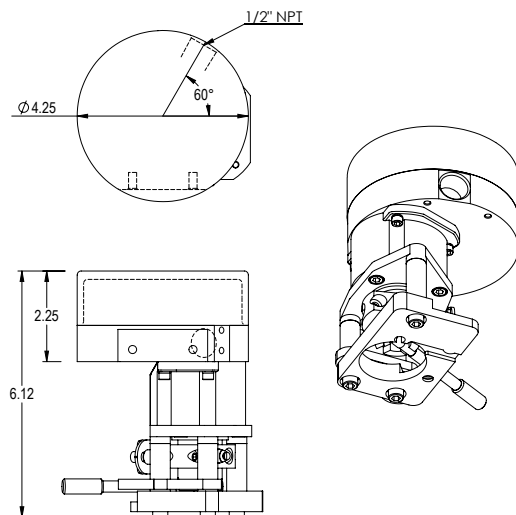
hanbayinc.com | 1 800 315 4461 | hanbaysales@hanbayinc.com



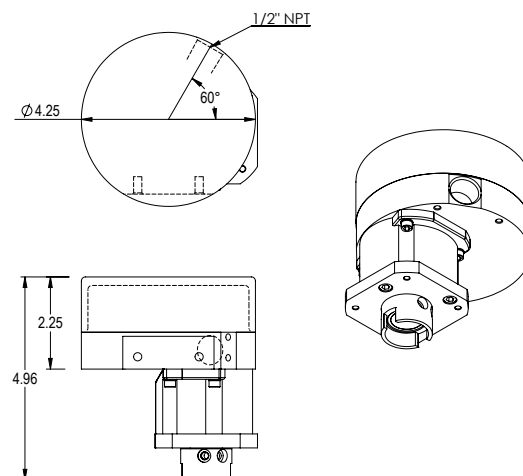
KEEP IT SIMPLE, GO ELECTRIC

Class I, Div I, Group B, C, D  
Class II, Groups E, F, G

## RDM w. internal valve:



## RDM w. ball valve:



## Specifications:

**Enclosure:** Aluminum die cast anodized or stainless  
 Class I, Div 1 Groups B, C, D/ T6  
 Class II Groups E, F, G/ T6 (85 °C )

**Temperature range:** 0 .. 65 °C internal  
 (derate duty cycle at high temp.)

**Ext. temp. range:** -40 .. 60 °C (w. Heater option)

**Stall protection:** Electronic position & motion detection

**Feedback:** Limit Switches

**Gears & Bearings:** Metal and bronze, oiled/greased for life

**Life Expectance:** 250,000 cycles in specified conditions

**Motor:** Brushless DC motor, computer control

**Voltages/Current:** 12-24 VDC/Max3A  
 110-240 VAC/Max1.5A @ 50/60 Hz

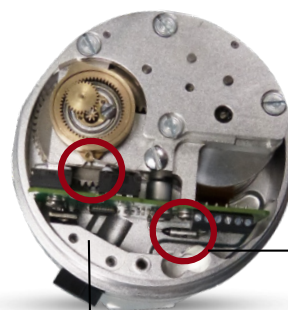
**Positioning Precision:** +/- 3 deg

**Motor Control:** By current sense and motion detection

**Mechanical shock:** 1m drop test no damage to  
 function Ramdom SAE J1211,  
 Chassis, Exterior

**Mechanical vibration:** Random SAE J1211, Chassis,  
 Exterior

## Thermal Cut-Off:



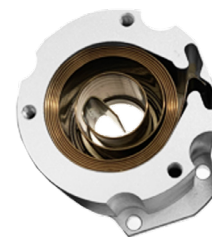
**Electronic Thermal Cut-Off**  
 Internal component  
 cuts power line at  
 128°C (262°F).  
 Actuator closes  
 when power is lost.

**Open & Close Limit Switch**  
 Spec'd to the open and closed positions  
 of the valve.

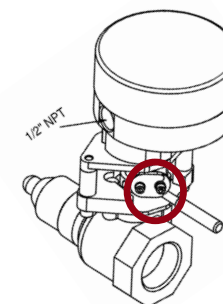
## Performance:

Model	Torque [in-lbs]	Speed Range [time to open]	Speed Range [time to close]
RDM	140	4	2 (2 sec power loss)

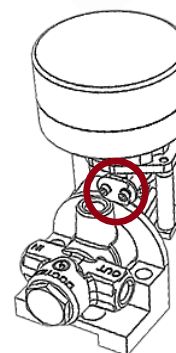
Actuators for both fail-close and  
 fail-open applications are available.



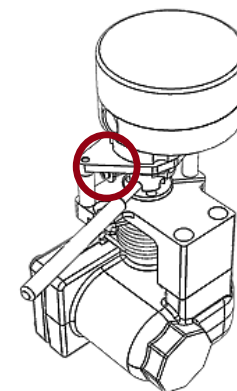
## Fusible Link:



**Fusible Link**  
 UL rated  
 (only used with  
 internal valves)



mechanically fails at  
 100°C (212°F),  
 allowing valve's  
 spring to shut off  
 the flow.



## Certifications:

IP 68 (60529:2013)  
 CSA & IECEx Certified Enclosure  
 ICES-001 ISSUE 5 July 2020  
 IEC 61000-6-2:2016, IEC 61000-6-4:2018  
 FCC 47 CFR PART 15 SUBPART B  
 EN 61362-1:2013 (GROUP 1, CLASS A; Industrial electromagnetic environment)